

# ECU Flash tool

User's Guide

V1.00

**Based on:**  
ECU Flash tool v1.0.1.3

# Contents

<b>1</b>	<b>Introduction.....</b>	<b>3</b>
1.1	What is ECU Flash tool? .....	3
<b>2</b>	<b>PC Installation .....</b>	<b>3</b>
2.1	General info.....	3
2.1.1	Minimum Configuration:.....	3
2.1.2	Hardware requirements:.....	3
2.1.3	Supported Windows operating system:.....	3
2.2	CD-ROM Method .....	3
2.3	Download Method.....	3
<b>3</b>	<b>Getting started .....</b>	<b>4</b>
3.1	Start-up ECU Flash tool .....	4
3.1.1	Open a firmware file(*.eff).....	4
3.1.2	Check if you have communication. ....	4
3.1.2.1	ECU is ready?.....	4
3.1.2.2	No ecu Detected?.....	4
3.1.3	Write file.....	4
3.1.4	Recover ECU. ....	5

# **1 Introduction**

## **1.1 What is ECU Flash tool?**

ECU Flash tool is a free tool to upgrade the ECU'S program memory (firmware).

ECU Flash tool runs as a 32-bit application on MS Windows®

# **2 PC Installation**

## **2.1 General info**

For some Windows® Operating Systems, administrative access is required to install software on a PC. ECU Manager must be installed on the PC hard drive – it cannot be run on a server.

### **2.1.1 Minimum Configuration:**

- Compatible Intel Pentium® class system
- Supported Windows operating system (see list 2.1.3)
- 512 MB memory
- 85 MB of hard disk space
- Internet Explorer 5.0 or greater for installation and on-line Help

### **2.1.2 Hardware requirements:**

- Serial port or USB-Serial
- USB

### **2.1.3 Supported Windows operating system:**

- Windows® 98 SE
- Windows ME
- Windows NT® 4.0 SP6a Workstations (NOT Servers)
- Windows 2000 SP2
- Windows XP Home and Professional
- Windows Vista

## **2.2 CD-ROM Method**

Place the CD into the drive. Follow the on screen menu to install ECU Flash tool. If no on-screen menu appears, use Explorer to find the setup directory on the CD. By double-clicking on the executable file **setup.exe** the installation will start.

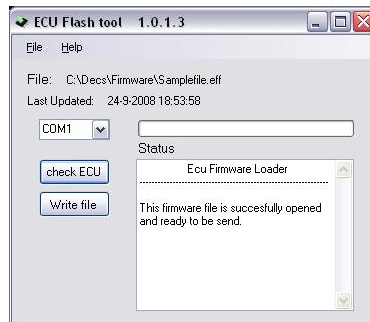
## **2.3 Download Method**

From the Decs web site <http://www.decselectronics.com/downloads.html> choose **ECU Flash tool vx.x.x.x zipped installation version.**

After downloading extract the zipped version. Open the directory and by double-clicking on the executable file **setup.exe** the installation will start.

## 3 Getting started

### 3.1 Start-up ECU Flash tool



#### 3.1.1 Open a firmware file(\*.eff).

Files are standard saved in the directory C:\Decs\Firmware\ and the latest firmware files are available online at <http://www.decselectronics.com/firmware.html>

#### 3.1.2 Check if you have communication.

Press button check ECU to see if you have communication.

##### 3.1.2.1 ECU is ready?

Go to [Write file](#)

##### 3.1.2.2 No ECU Detected?

- Is the ECU is powered?
- Is the ignition key on?
- Is the communication cable connected between the Decs ECU and the selected COM port (Standard COM1)?

If all these questions are answered with yes,  
[See Recover ECU](#)

#### 3.1.3 Write file.

Press button Write file.



**Important:** do not interrupt the communication during transmission.

### 3.1.4 Recover ECU.

This function is a last solution to recover your ECU when the ECU does not respond anymore on communication or anything else. Can be caused by a bad firmware file or interrupting the transmission during a firmware update.

How to recover:

- Open a firmware file.(\*.eff)
- Select the right Comport
- Ensure the communication cable is connected.
- Switch the key switch on and leave it on.
- Disconnect the ECUs power
- Select file in the menu and select recover
- ECU Flash tool has the status: Waiting for ECU.....
- Power up the ECU

If everything is done successful ECU Flash tool is sending the new firmware to the ECU.

**Important:** do not interrupt the communication during transmission.

Regards,  
Decs Electronics